

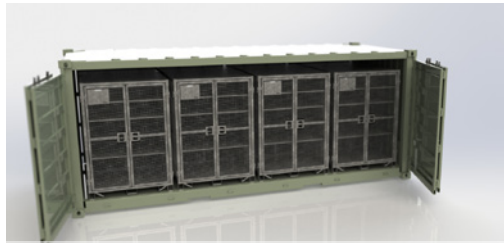
**DEPLOYMENT
LOCKER**

- ▶ STORE, TRANSPORT AND OPERATE
- ▶ FITS CONTAINER, PLS, CROP, AIR PALLET
- ▶ STACK FULLY LOADED
- ▶ SLING LOAD
- ▶ 4-WAY FORKLIFTABLE
- ▶ IN- OR OUTDOOR



TECHNICAL DATA

Part number	SCGDL
Size (WxDxH) [in]	52x44x73
Tare weight	460 lbs
Capacity	5,000 lbs
Stackability Stationary & Mobile	2 cages
Material	Galvanized Extra High-Strength Steel
Sling loadable	Yes
Lockable	Yes, standard padlock
Shelves	5 levels
Forkliftable	4-way



FIT EIGHT EA IN 20' CONTAINER



RAIN COVER*



SLING LOAD



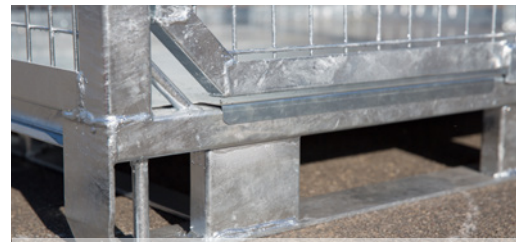
WAREHOUSE SYSTEM



CUSTOMIZABLE**





GLOVE-FRIENDLY LOCK



MULTIPLE TIE DOWNS

*OPTIONAL ** EASILY REMOVE SHELVES

 Spacesaver® Corporation is a division of  KI.

800.492.3434 | www.spacesaver.com | ssc@spacesaver.com

KI and Spacesaver are registered trademarks of Krueger International, Inc.

© 2016 KI and Spacesaver Corporation. All Rights Reserved.

SSC/DEL DeploymentLocker_0416_info_MIL

